

# Welcome

# Meet the Teacher

## Year 6





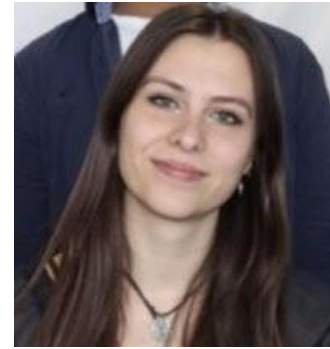
# Year 6 Teaching Team



Mr Smith



Miss Stone



Miss. de Coriolis



6JS will be Howell Class

6S will be Khan Class



# School timings

- ▶ Attendance: It is essential to be in as much as possible to maximise learning and give children the best chances at success and integration. As our attendance policy quotes:

Staplehurst School is committed to the continuous raising of achievement of all of our pupils. Regular attendance is critical if our pupils are to be successful and benefit from the opportunities presented to them.

One of our basic principles is to celebrate success. Good attendance is fundamental to a successful and fulfilling school experience. Staplehurst School actively promotes 100% attendance for all of our pupils and we use a variety of weekly, termly and annual awards, to promote good attendance and punctuality.

- ▶ Term starts (for children) on **Tuesday 3<sup>rd</sup> September**.
- ▶ Drop off as normal 8:35 – 8:50am through gate.
- ▶ Learning starts 8.35am, children should be in class at this time ready to begin.
- ▶ Pick up - Gate opens at 3:10pm. Classroom dismissal = 3:15pm via the external classroom doors.
- ▶ Walking Home information to be collected ready for September

## Children come first; they are our future

- We build strong **positive** relationships and trust; as a highly inclusive school we celebrate individuality and promote well-being through **excellent** pastoral provision.
- We promote a thirst for knowledge and a love of learning by teaching an ambitious knowledge rich curriculum that inspires curiosity and is relevant for our community.
- We empower all children through our high expectations to be tolerant, respectful, **determined** and **independent** active members of a diverse local, national and global community.
- We encourage all children to achieve in all areas so that they can reach their potential.



# Expectations for September

At Staplehurst School, we show...



STAPLEHURST  
SCHOOL

## ▶ **Positivity**

- ▶ A positive attitude to school and learning.
- ▶ Being kind and supportive to each other.

## ▶ **Respect**

- ▶ Showing respect to adults and each other.
- ▶ Being polite and well behaved in the classroom and around school.

## ▶ **Independence**

- ▶ Being independent and motivated with learning.

## ▶ **Determination**

- ▶ Being determined and resilient learners.
- ▶ 100% effort at all times.

## ▶ **Excellence**

- ▶ Setting a good example to the rest of the school.
- ▶ Demonstrating excellence in behaviour, attitude and learning.



# Rewarding pupils showing our PRIDE Values

- ▶ PRIDE Points & PRIDE Rewards
- ▶ Verbal praise
- ▶ Certificates in Celebration Assembly
- ▶ Reward equipment at playtime
- ▶ Prizes e.g. Books for 30 reads
- ▶ Non-uniform days – house PRIDE winners

*focus on the good*



# When behaviour does not meet standards



As per our policy, we band behaviour accordingly. Whilst our approach is always restorative and preemptive, when we do encounter behaviour that doesn't meet the high-expectations we have, the following measures/procedures are considered:

BAND 1	BAND 2	BAND 3	BAND 4
<p>Talking or noise eating. Interrupting teacher or adult. Assaulting work. Wasting time. Bullying other pupils/teaching opportunities. Cheating etc. Involuntarily swearing. Making inappropriate remarks. Talking when you are supposed to be listening. Not following class rules. Cursing out. Wearing adult clothing. Running in the school building. Not putting hand up to ask. Interrupting other pupils. Wearing school jewellery. Silly voices/Minor Annoyance. Pushing or tripping. Talking during class work. Minor Playground incidents. Wearing of inappropriate items. Bringing in food, trading etc.</p>	<p>Revised band 1 (Bullying) Sitting on the floor. Using swear words deliberately. Arguing with adults. Abuse of school or other people's property. Throwing objects in anger. Refusing to admit fault. Lying. Persistent refusal to follow instructions. Allowing others to access the school network by using their names and passwords. Attempting to access the school network using another pupil's login. Conspiring or deliberately destroying the data of other users. Accidentally accessing offensive or pornographic material and failing to report the incident.</p>	<p>Revised band 2 (Bullying) Conductive discipline (Bullying) Verbal Abuse Spitting in someone's direction. Deliberately hitting, kicking or striking another person. Fighting. Swearing at staff or pupils. Racial or homophobic abuse. Persistent Bullying. Running out of class without the school's blessing. Being. Stealing other people's property. Deliberate actions that could bring the school into disrepute or create the integrity of the school affected. Using any site or other means to subvert the school's IT systems. Deliberately accessing offensive or pornographic material. Bringing into school possession of a prohibited item. Knowingly receiving or transmitting material that infringes the copyright of another person through the school's IT systems. Deliberately accessing or trying to access material that should be considered illegal. Continual infringements of the school policy, following band 2 or band 3 warnings/sanctions. Harmful and/or abusive use of mobile phones or staff or pupils.</p>	<p>Revised Band 3 (Bullying) Violent aggression (Bullying) e.g. Striking teachers, tripping other staff, hitting or punching another child or member of staff. Leaving the school site. Stealing school property. Revolting during the classroom without permission (Bullying). Fighting in the classroom. Minor serious playground incidents/fighting. Serious fighting &amp; intentional physical harm to other children. Threatening large language students. Serious challenging to authority. Verbal abuse/harassment to any staff or parent/guardian. Bringing into school possession of an illegal, harmful, toxic, use of social media and technology. Verbal Abuse Stealing. Persistent Bullying. Revolting. Truancy. Bringing into school possession a prohibited item. Malicious or inappropriate use of new technologies (use of inappropriate social media or website).</p>
<p><b>Sanction</b> The adult will write the following on the board: The adult will write the date on the board as a warning. The adult will give a verbal warning. The adult will give a written warning. The adult will lose the minutes from the next break. The adult will be recorded on CPOMS.</p>	<p><b>Sanction</b> The adult will write the date on the board as a warning. The adult will give a verbal warning. The adult will give a written warning. The adult will lose the minutes from the next break. The adult will be recorded on CPOMS.</p>	<p><b>Sanction</b> The adult will write the date on the board as a warning. The adult will give a verbal warning. The adult will give a written warning. The adult will lose the minutes from the next break. The adult will be recorded on CPOMS.</p>	<p><b>Sanction</b> The adult will write the date on the board as a warning. The adult will give a verbal warning. The adult will give a written warning. The adult will lose the minutes from the next break. The adult will be recorded on CPOMS.</p>

- ▶ Teachers will put names on the board and ticks next to them to offer children chances to correct behaviour before escalation.
- ▶ Reflections (a restorative lunchtime session where the child spends time with a senior leader, completing a restorative activity to help reflect on behaviour, followed up with a reconnecting conversation with the adult).
- ▶ Repeated reflections (x3 in one term) will result in a meeting with the headteacher and parents/carers.
- ▶ Any behaviour of low-level will be communicated by the class teacher to parents and carers at the end of the day. This is to support everyone in moving the behaviour forward positively.





# Reading

- ▶ Reading records should be handed in every day, with home reading recorded in them. Pupils can aim for 30 reads rewards.
- ▶ They will be checked on Tuesday and Friday. New reading books will then be given if an adult has signed to say the current book has been read fully.
- ▶ Messages should go via the year group email, or urgent messages e.g. pickup or appointments via the office, not via the reading record.
- ▶ Daily reading lessons. Fluency and Extended read sessions build fluency, vocabulary and prosody (reading with expression and relevant speed). Close read sessions develop analysis of the text.





# School uniform, PE Kit and other equipment.

- ▶ Winter uniform.
- ▶ Winter uniform as per policy. One pair of stud earrings only. Bows in navy or school yellow and no bigger than the palm of your child's hand. Hair below shoulders needs to be tied back.
- ▶ Blue P.E. t-shirt, blue or black shorts, plimsolls/trainers (Monday and Friday)
- ▶ Tracksuits or sweatshirts (blue or black) may be worn when cold. No leggings. Sweatshirts should not have a hood. Hair must be tied back, and no jewellery should be worn.
- ▶ If your child is unable to take part in P.E, please send in a note/email to explain why.



# Curriculum Coverage

- **T1 – Globalisation:** How and why are resources transported across the globe? (Geography)
- **T2 – Benin:** Should the Benin Bronzes be kept or returned to the British Museum? (History)
- **T3 – Migration:** What influences the movement of people across the world? (Geography)
- **T4 – Civil Rights:** How has the world become more accepting of diversity over the past 100 years? (History)
- **T5 – World War II:** What was the social and economic impact of World War 2 on Britain? (History)
- **T6 – Sustainability:** How are countries becoming sustainable? Why is this important? (Geography)

- ▶ Curriculum themed weeks STEM Week, Keeping Healthy Week, Wellbeing Week

## Trips and Enrichment:

- ▶ We endeavour to for each year group to participate in an enrichment workshop, a local trip and a wider trip (for example London), all linked to our curriculum. More information about the trips will be shared early next year.





# Quality-First Teaching

Our teaching and learning policy captures our approach to how children at Staplehurst learn:

Staplehurst is a school that is happy, purposeful and stimulating where each child's needs are viewed individually, by a staff of highly trained classroom practitioners who demonstrate excellence underpinned by high expectations and professionalism.

Our aim is to instil, in each unique pupil, a love of learning; develop their confidence in order to reach their full potential; and, underpinned by a body of powerful knowledge, cultivate the lifelong skills of independence, creative thinking, team work and effective participation.

We consider ourselves to be a knowledge-rich school, whereby children master a body of subject-specific knowledge defined by the school. Skills are generally an outcome of our curriculum, not its purpose. At Staplehurst, we emphasise big ideas and invaluable knowledge that we want our children to acquire.

- ▶ Same-Day Intervention
- ▶ Formative assessment
- ▶ Retrieval Practice
- ▶ Effective use of feedback
- ▶ Quality first teaching
- ▶ Precision teaching



# Homework



- ▶ One piece of Maths & SPAG every week.
- ▶ 30 minutes a week.
- ▶ Focus on consolidation of key concepts taught. Homework should not be overly challenging with the intention to offer opportunity to practice, increase confidence and boost speed/stamina of working.
- ▶ To be handed out on a Friday and handed back in by Tuesday. Completion will be expected.
- ▶ Children also need to be reading every night, and practise times tables (including division facts).
- ▶ Please remember to fill in the reading record (PRIDE Points are given). Pupils can aim for 30 reads rewards.



# Ways to help your child at home

- ▶ Helping to ensure your child arrives at school on time every day.
- ▶ Regular reading (aim for 30 reads).
- ▶ Times tables practice. (TT Rockstars)
- ▶ Ensuring homework is completed and handed in on time, and when completing internet research, aiding children in finding key points.
- ▶ Learning the spellings sent home.
- ▶ Visiting the library to research topics.
- ▶ Visiting places of interest
- ▶ Support pupils with holiday learning tasks.



# SATS



STAPLEHURST  
SCHOOL

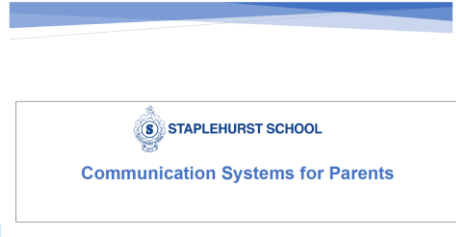
- ▶ Further information will be provided on SATs and other assessments in September.
- ▶ SATS Week: Monday 12th May to Thursday 15th May 2025.



# Communication



- ▶ Parents can share messages and key information (non-urgent) via the school office or at the end of the day with the class teacher.
- ▶ Updates and minor issues can be discussed at pickup.
- ▶ Should you require a meeting to discuss an issue please inform your teacher in advance and a mutually convenient time will be arranged.
- ▶ Parents' evenings are held 2 x per year to discuss your child's learning.
- ▶ Key information about the school is posted on our website, including: the weekly newsletter; school times and term dates; events and announcements; curriculum information and policies and procedures.
- ▶ The newsletter is published weekly and sent to parent weekly via SCOPAY and published on our website by 12 noon on Monday during term time.
- ▶ Please telephone us to communicate brief information about your child that the school needs to know in an emergency, e.g., to let us know that you will be late collecting your child. We ask parents to telephone the school on 01580 891765.
- ▶ The school office is open between 8:30am to 4:00pm, during term-time. At all other times there is an answering service available to take your message.
- ▶ Whilst email is preferable
- ▶ **attendance@staplehurst.kent.sch.uk**, telephone calls are appropriate to notify us that your child will be absent from school
- ▶ There are times when we feel that we would like to say something about the service or treatment that we receive. If you feel you need to complain, then please follow the procedure outlined here:
- ▶ In the first instance you should speak to your child's class teacher. If you are still dissatisfied, please contact the phase leader /or the deputy headteacher as soon as you can to make an appointment. If the matter cannot be resolved, please contact the headteacher. If you remain dissatisfied with the outcome, you should follow the school's Complaints Procedure, which is set out in the school Complaints Policy. The Complaints Policy is available on our website.







# Key Events

- ▶ High quality, engaging learning experiences every day
- ▶ Themed weeks (STEM Week, Keeping Healthy Week)
- ▶ Trips and visits – London trip, Fieldwork
- ▶ Residential (Information shared on Tuesday – video to follow)
- ▶ Transition and Secondary school applications etc
- ▶ Christmas Carol Concert
- ▶ End of year production
- ▶ Leaver's party
- ▶ Leaver's Assembly

# FAQs other Questions

- ▶ Home-School Agreement
- ▶ Lunches all through SCOPAY
- ▶ Year group email: [year6@Staplehurst.kent.sch.uk](mailto:year6@Staplehurst.kent.sch.uk)