



**Staplehurst School**

# **Safeguarding Policy** (including Child Protection Policy and Designated Safeguarding Lead)

**Date**

Policy reviewed and ratified at a meeting of the Full Governing Body

**6 December 2017**

Policy to be next reviewed

**Autumn Term 2018**

## **Designated Members of Staff (UPDATED SEPTEMBER 2018)**

The Designated Safeguarding Lead (DSL) is Amanda Stevenson, Acting Headteacher.

Contact details: Tel 01580 891765 or [astevenson@staplehurst.kent.sch.uk](mailto:astevenson@staplehurst.kent.sch.uk)

The DSL is supported by Deputy DSLs:

- Vicky French, Inclusion Manager
- Bonny Sullivan, Family Liaison Manager

The Link Governor for Safeguarding is: **Caroline Bennett**, Parent Governor

Contact via the Clerk to the Governors [clerktogovernors@staplehurst.kent.sch.uk](mailto:clerktogovernors@staplehurst.kent.sch.uk)

In her absence these matters will be dealt with by **Chris Roome**, Chair of the Governors

Contact via the Clerk to the Governors [clerktogovernors@staplehurst.kent.sch.uk](mailto:clerktogovernors@staplehurst.kent.sch.uk)



## Contents

Contents .....	2
Introduction and ethos.....	5
Context .....	5
Definition of safeguarding.....	6
Related safeguarding policies .....	6
Roles & Responsibilities .....	7
Recognition and categories of abuse .....	9
Staff induction, awareness and training .....	10
Safe working practice .....	10
Staff supervision and support .....	11
Safer recruitment .....	11
Safeguarding and child protection procedures.....	11
Record Keeping .....	13
Working with Other Agencies .....	13
Confidentiality and information sharing.....	14
Complaints & Allegations against members of staff.....	14
Safeguarding children with special educational needs and disabilities.....	15
Curriculum and Staying Safe .....	16
Online Safety .....	16
The Use of School Premises by Other Organisations .....	17
Security.....	17
Searching and Confiscation.....	17
Monitoring and Review .....	17
Appendix 1: Responsibilities of the Governing Body and the Headteacher .....	18
Appendix 2: Categories of Abuse .....	20
Appendix 3: Specific Safeguarding Issues .....	22
Appendix 4: Keeping yourself safe when responding to disclosures (the 6 R's – what to do if...) .....	24
Appendix 5: National Support Organisations.....	25



Appendix 6: School Safeguarding Policies..... 27

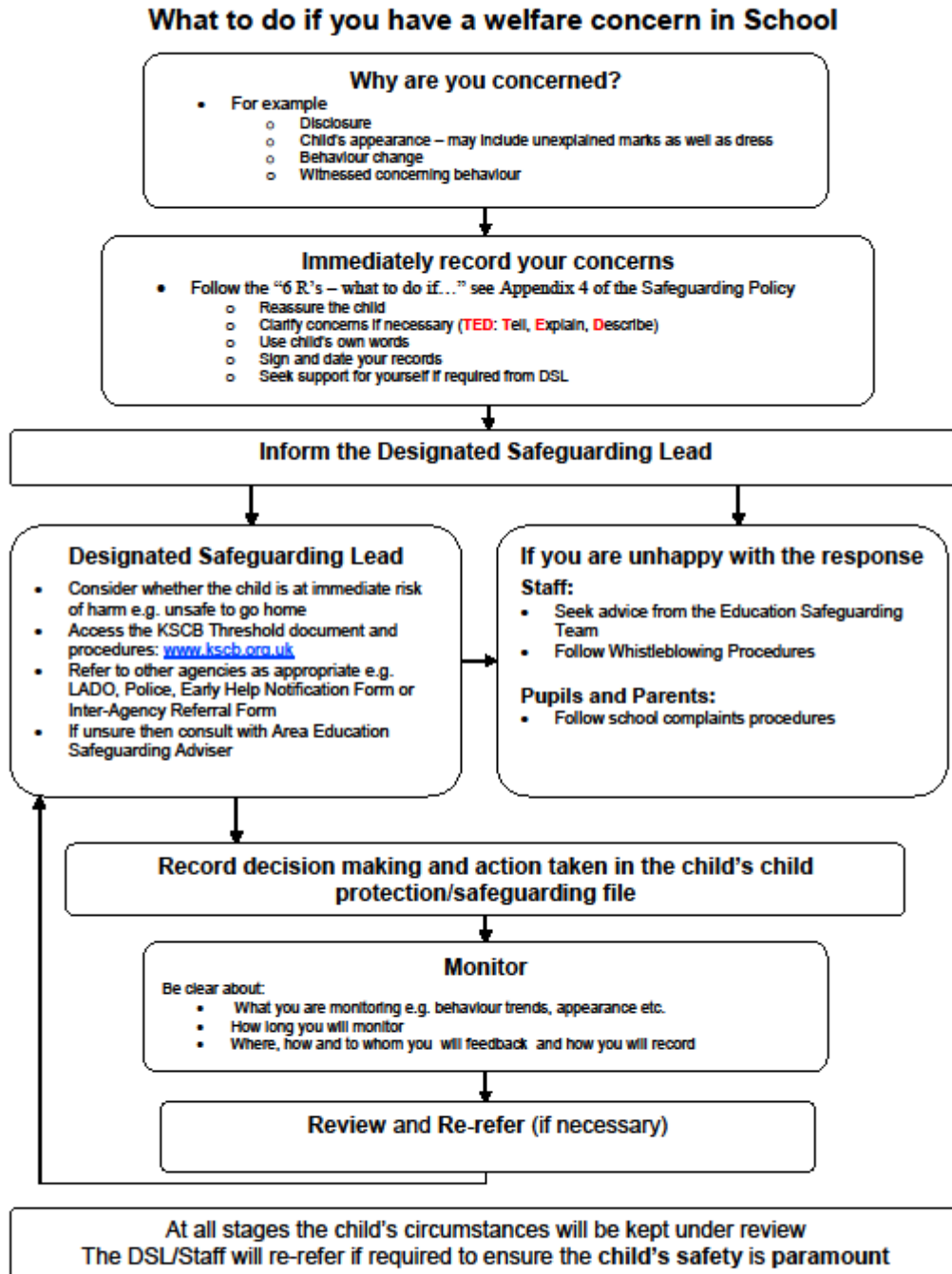
Appendix 7: Child Protection information - Supply Teachers and Classroom Volunteers..... 28

Appendix 8: Welfare Incident/Concern Form ..... 30

Under Review



What to do if you have a welfare concern in School





## Introduction and ethos

Staplehurst School (the School) is a community school and all those directly connected (staff, governors, parents, families and pupils) have an essential role to play in making it safe and secure. The School recognises our moral and statutory responsibility to safeguard and promote the welfare of all children with their best interest in the centre of our work.

The School recognises the importance of providing an ethos and environment within school that will help children to feel safe, secure and respected; encourage them to talk openly; and enable them to feel confident that they will be listened to. We are alert to the signs of abuse and neglect and follow our procedures to ensure that children receive effective support, protection and justice.

Our school core safeguarding principles are:

- It is a whole school responsibility to safeguard and promote the welfare of children as its paramount concern
- All children (defined as those up to the age of 18) regardless of age, gender, ability, culture, race, language, religion or sexual identity, have equal rights to protection
- All children have a right to be heard and to have their wishes and feelings taken into account
- All staff including temporary & voluntary staff (herein referred to as Staff) understand safe professional practice and adhere to our code of conduct and other associated policies
- All Staff have a responsibility to recognise vulnerability in children and act on any concern in accordance with this guidance

There are four main elements to our safeguarding policy

- **Prevention** ( e.g. positive, supportive, safe school culture, curriculum and pastoral opportunities for children, safer recruitment procedures);
- **Protection** (by following the agreed procedures, ensuring all Staff are trained and supported to respond appropriately and sensitively to safeguarding concerns);
- **Support** (for all pupils, parents and Staff, and where appropriate specific intervention for those who may be at risk of harm);
- **Working with parents and other agencies** (to ensure appropriate communications and actions are undertaken).

The procedures contained in this policy apply to all Staff and governors and are consistent with those of Kent Safeguarding Children Board (KSCB).

## Context

This policy has been developed in accordance with the principles established by the Children Acts 1989 and 2004 and related guidance. This includes:

- **DfE guidance Keeping Children Safe in Education 2018 (KCSIE)**
- **Working Together to Safeguard Children 2018 (WTSC)**
- **Framework for the Assessment of Children in Need and their Families (2000)**
- **Kent and Medway Safeguarding Children Procedures (Online, 2016)**
- **Ofsted guidance 'Inspecting safeguarding in early years, education and skills' (2016)**
- **Early Years and Foundation Stage Framework 2017 (EYFS)**

Section 175 of the Education Act 2002 requires school governing bodies, local education authorities and further education institutions to make arrangements to safeguard and promote the welfare of all children who are pupils at a school, or who are students under 18 years of age. Such arrangements will have to have regard to any guidance issued by the Secretary of State.



## Definition of safeguarding

“Safeguarding is not just about protecting children from deliberate harm. It includes a wide range of issues relating to pupil’s welfare, health and safety.” (Inspecting safeguarding in early years, education and skills, Ofsted, September 2016)

All safeguarding policies will be reviewed on an annual (minimum) basis by the Governing Body which has responsibility for oversight of the School’s safeguarding and child protection systems. The Designated Safeguarding Lead will ensure regular reporting on safeguarding activity and systems in school to the Governing Body. The Governing Body will not receive details of individual pupil situations or identifying features of families as part of their oversight responsibility.

The School acknowledges that this policy will incorporate a range of safeguarding issues including (but not limited to):

- Bullying (including cyberbullying)
- Children missing education
- Child missing from home or care
- Child Sexual Exploitation (CSE)
- Domestic violence
- Fabricated or induced illness
- Gangs and youth violence
- Hate
- Honour based violence, including Female Genital Mutilation (FGM)
- Mental health
- Online safety
- Prevent (Radicalisation and extremism)
- Private fostering
- Relationship abuse and gender-based violence
- Youth Produced Sexual Imagery or “Sexting”
- Trafficking

(Also see Annex A within ‘Keeping children safe in education’ 2018 and Appendix 3)

The School has more detailed policies on more specific safeguarding issues e.g. Behaviour & Discipline (including anti-bullying), Online Safety, Confidentiality and Spiritual, Moral, Social and Cultural Development which includes promoting British Values.

Staff recognise that children experiencing specific safeguarding issues identified above are no different to safeguarding against any other vulnerability or concern and will be approached and responded to in the same way as protecting children from any other risks.

## Related safeguarding policies

We are aware that safeguarding is fundamental to the welfare of all children in our care. This policy is therefore one of a series in the School’s integrated safeguarding portfolio and should be read in conjunction with the policies as listed in Appendix 6

Supporting Guidance (to be read and followed alongside this document)

- **Teachers Standards 2012**
- **“Safeguarding Disabled Children – Practice Guidance” - DOH, 2009**
- **“Guidance for Safer Working Practice for Adults who Work with Children and Young People in Education Settings” - Safer Recruitment Consortium, October 2015**
- **“ What to do if you are worried a child is being abused” – DfE, March 2015**
- **KSCB document: “Safe Practice with Technology – Guidance for Adults who Work with Children and Young People”**
- **KCC Safeguarding Children and Child Protection – “Induction Leaflet Guidelines for School Staff”**
- **KCC Guidelines for “Safeguarding Record Keeping in Schools”**
- **KCC Advice notes - “Dealing with Disclosures in School”**
- **Early Years Foundation Stage 2017 Welfare Requirements**

These documents can be found in the Inclusion Manager’s Office.



## Roles & Responsibilities

Everyone who comes into contact with children and their families has a role to play in safeguarding children. Schools and colleges form part of the wider safeguarding system for children.

The governing body have read and will follow KCSIE 2018. Further information regarding the key strategic responsibilities of the governing body and Headteacher are identified in Appendix 1.

The School's nominated governor for safeguarding is named on the front of this document. The nominated governor will take the lead role in ensuring that the School has an effective policy which interlinks with other related policies; that locally agreed procedures are in place and being followed; and that the policy and structures supporting safeguarding children are reviewed at least annually.

The Governing Body and Headteacher will ensure that the DSL is properly supported in this role at a time and resource level.

### Designated Member of Staff

The School has appointed a member of the leadership team, as the Designated Safeguarding Lead (DSL). The DSL named on the front cover of this document, has the overall responsibility for the day to day oversight of safeguarding and child protection systems in school.

The DSL will undergo appropriate and specific training to provide them with the knowledge and skills required to carry out their role. This training will be approved by and meet the standards as required by the Kent Safeguarding Children Board. The DSL's training will be updated formally every two years but their knowledge and skills will be updated through a variety of methods at regular intervals (e.g. KCC newsletters, blogs and alerts), at least annually, to keep up with any developments relevant to their role.

The School has appointed additional staff to deputise for the DSL. The deputies are named on the front cover of this document. Deputy DSLs have attended appropriate training which enables them to fulfil this role. Whilst the activities of the designated safeguarding lead may be delegated to the deputies, the ultimate lead responsibility for safeguarding and child protection remains with the DSL and this responsibility will not be delegated.

It is the role of the DSL to:

- Act as the central contact point for all Staff to discuss any safeguarding concerns
- Maintain a confidential recording system for safeguarding and child protection concerns
- Coordinate safeguarding action for individual children - in the case of Looked After Children, the DSL should have the details of the child's social worker and the name of the virtual school head in the authority that looks after the child (with the DSL liaising closely with the Designated teacher).
- Liaise with other agencies and professionals in line with Working together to safeguard children
- Ensure that locally established procedures are followed and making referrals to other agencies, including Early Help and Specialist Children's Services (SCS) as necessary
- Represent, or ensure the School is appropriately represented at inter-agency safeguarding meetings (including Child Protection conferences)
- Manage and monitor the School's part in Early Help / Child in Need / Child Protection plans
- Be available during term time (during school hours) for Staff in the School to discuss any safeguarding concerns
- Ensure all Staff access appropriate safeguarding training and relevant updates in line with the recommendations within KCSIE (2018)

Further details about the role of the DSL can be found in 'Keeping Children Safe in Education' 2018, part two.

### Members of staff

All Staff have a responsibility to:

- provide a safe environment in which children can learn
- ensure all children are able to develop appropriate strategies to recognise and respond to risk and build resilience
- identify and recognise children who may be in need of extra help, who are suffering, or are likely to suffer significant harm
- provide help for children, where appropriate and reasonable
- take appropriate action to prevent safeguarding concerns escalating and work with other services as needed
- safeguard children's wellbeing and maintain public trust in the teaching profession as part of their professional duties



- maintain an attitude of 'it could happen here' where safeguarding is concerned and to always act in the best interests of the child
- respond to and refer any concerns about children or other members of the community in accordance with this policy
- Contribute towards, read and adhering to the School's policies

All Staff know what to do if a child tells them he/she is being abused or neglected. Staff know to maintain an appropriate level of confidentiality whilst at the same time liaising with relevant professionals such as the DSL and other agencies as appropriate. Staff know they must never promise a child that they will not tell anyone about a concern or allegation as this may ultimately not be in the best interests of the child. See Appendix 4 for advice for Staff on responding to safeguarding concerns.

**The welfare and safety of children are the responsibility of all Staff in school and ANY concern for a pupil's welfare MUST always be reported to the Designated Safeguarding Lead.**

### Children and young people

Children and young people (pupils) have a responsibility to:

- Contribute to the development of the School's safeguarding policies
- Read and adhere to (at a level appropriate to their age and ability) the schools safeguarding policies and procedures
- Seek help from a trusted adult if things go wrong, and support others that may be experiencing safeguarding concerns
- Develop and take responsibility (at a level that is appropriate to their individual age, ability and vulnerabilities) for keeping themselves and others safe, including online

### Parents and Carers

Parents/carers have a responsibility to:

- Read the relevant policies and procedures, encouraging their children to adhere to them, and adhering to them themselves where appropriate
- Discuss safeguarding issues with their children, support the school in their safeguarding approaches, and reinforce appropriate safe behaviours at home
- Identify changes in behaviour which could indicate that their child is at risk of harm online
- Seek help and support from the School, or other appropriate agencies, if they or their child encounters any safeguarding concern
- Contribute to the development of the School's safeguarding policies

A statement in the School's Home School agreement will inform parents and carers about our school's duties and responsibilities under child protection and safeguarding procedures.

Parents can obtain a copy of the School's **Safeguarding Policy** and other related policies on request and can view them via [the School's website](#).

### Local support

All Staff are made aware of local support available

- **Contact details for Area Safeguarding Adviser (Education Safeguarding Team)**
  - West Kent – Worrall House (Tonbridge & Malling, Tunbridge Wells, Maidstone). 30 Kings Hill Avenue, West Malling, ME19 4AE [www.kelsi.org.uk/support-for-children-and-young-people/child-protection-and-safeguarding/safeguarding-contacts](http://www.kelsi.org.uk/support-for-children-and-young-people/child-protection-and-safeguarding/safeguarding-contacts)
- **Contact details for Online Safety (Education Safeguarding Team)**
  - Rebecca Avery, Education Safeguarding Adviser (Online Protection):
  - Ashley Assiter, Online Safety Development Officer
  - 03000 415797
  - [esafetyofficer@kent.gov.uk](mailto:esafetyofficer@kent.gov.uk) (non-urgent issues only)
- **Contact details for the LADO**





- Telephone: 03000 410888
- Email: [kentchildrenslado@kent.gov.uk](mailto:kentchildrenslado@kent.gov.uk)
- **Childrens Specialist Services**
  - Central Duty Team: 03000 411111
  - Out of Hours Number: 03000 419191
- **Early Help and Preventative Services**
  - [earlyhelp@kent.gov.uk](mailto:earlyhelp@kent.gov.uk)
  - 03000 419222
- **Kent Police**
  - 101 (or 999 if there is an immediate risk of harm)
- **Kent Safeguarding Children Board (KSCB)**
  - [kscb@kent.gov.uk](mailto:kscb@kent.gov.uk)
  - 03000 421126

## Recognition and categories of abuse

All Staff in school should be aware of the definitions and signs and symptoms of abuse. There are four categories of abuse:

- Physical abuse
- Sexual abuse including online exploitation, grooming and sexting
- Emotional abuse
- Neglect

The most up to date definitions and possible indicators and signs of abuse are found in Appendix 2. Staff should also refer to Appendix 3 for information on Specific Safeguarding Issues e.g. **Child Missing in Education, Child Sexual Exploitation, "Honour" based violence, Forced Marriage, Female Genital Mutilation and Radicalisation**. For more detailed information Staff should refer to Part 1 and Annex A within 'Keeping children safe in education' 2018 and 'What to do if you are worried a child is being abused' 2015. All Staff should be aware that abuse, neglect and safeguarding issues are rarely standalone events that can be covered by one definition or label. In most cases multiple issues will overlap with one another.

Staff are made aware that that child welfare concerns may arise in many different contexts, and can vary greatly in terms of their nature and seriousness. Children may be abused in a family or in an institutional or community setting, by those known to them or by a stranger. They may be abused by an adult or adults, or another child or children. Children may be abused via the internet by their peers, family members or by unknown and in some cases unidentifiable individuals. In the case of honour based violence, including forced marriage and female genital mutilation, children may be taken out of the country to be abused. An abused child will often experience more than one type of abuse, as well as other difficulties in their lives.

Abuse and neglect can happen over a period of time, but can also be a one-off event. Child abuse and neglect can have major long-term impacts on all aspects of a child's health, development and well-being.

The warning signs and symptoms of child abuse and neglect can vary from child to child. Children also develop and mature at different rates so what appears to be worrying for a younger child might be normal behaviour for an older child. Parental behaviours may also indicate child abuse or neglect, so Staff should also be alert to parent-child interactions which are concerning and other parental behaviours. This could include parents who are under the influence of drugs or alcohol or if there is a sudden change in their mental health.

By understanding the warning signs, we can respond to problems as early as possible and provide the right support and services for the child and their family. It is important to recognise that a warning sign doesn't automatically mean a child is being abused.



## Staff induction, awareness and training

All Staff have been provided with a copy of Part One of the “**Keeping Children Safe in Education**” (2018) which covers Safeguarding information. School leaders will read the entire document. School leaders and all Staff who work directly with children will access Annex A within Keeping Children Safe in Education 2018. Staff have signed to confirm that they have read and understood Part One and Annex A.

The DSL will ensure that all new Staff are appropriately inducted as regards the School’s internal safeguarding procedures and communication lines detailed in the **Staff Handbook**. A summary information sheet is available to be given to supply teachers and volunteers to support this process (See Appendix 7)

All Staff will receive appropriate safeguarding and child protection training (organised by the DSL) which will enable them to:

- **Recognise** potential safeguarding and child protection concerns involving pupils and adults (colleagues, other professionals and parents/carers)
- **Respond** appropriately to safeguarding issues and take action in line with this policy
- **Record** concerns in line with the school policies
- **Refer** concerns to the DSL and be able to seek support external to the school if required

Staff will receive appropriate training to ensure they are aware of a range of safeguarding issues (see definition of safeguarding) and are aware that behaviours linked to the likes of drug taking, alcohol abuse, truanting and “peer on peer” abuse such as bullying and sexting can put children in danger. The staff training will also include the School’s responsibilities, the School’s child protection procedures, online safety, safe working practice and external reporting mechanisms.

All Staff will receive regular safeguarding and child protection updates, as required, but at least annually, to provide them with relevant skills and knowledge to safeguard children effectively.

All Staff will be made aware of the School’s expectations regarding safe and professional practice via the **Staff Code of Conduct and Handbook** (which included ICT AUP) which is provided and discussed as part of the induction process.

The School recognises the expertise which Staff build by undertaking safeguarding training and managing safeguarding concerns on a daily basis. Opportunity is therefore provided for all staff to contribute to and shape safeguarding arrangements and the safeguarding. Other safeguarding policies, for example the school Code of Conduct and Acceptable Use Policy, are also sent to Staff for their feedback before ratification by the Governing Body.

The DSL and Headteacher will provide an annual report to the Governing Body detailing safeguarding training undertaken by all staff and will maintain up to date registers of who has been trained.

Although the School has a nominated lead for the governing body named at the front of this document, all members of the governing body will access appropriate safeguarding training which covers their specific strategic responsibilities on a regular basis.

## Safe working practice

All Staff are required to work within clear guidelines on **Guidance for Safer Working Practice for Adults who Work with Children and Young People in Education Settings** which is referenced in the **School’s Code of Conduct**.

Children may make allegations against staff in situations where they feel vulnerable or where they perceive there to be a possible risk to their welfare. As such, all staff should take care not to place themselves in a vulnerable position regarding child protection or potential allegations. For example, it is always advisable for interviews or work with individual children or parents to be conducted in view of other adults.

Physical intervention should only be used when the child is endangering him/herself or others and such events should be recorded and signed by a witness. Staff should be aware of the School’s policy on the Use of Restraint detailed in the **Behaviour and Discipline Policy**, and any physical interventions must be in line with agreed policy and procedure in which appropriate training should be provided.



Full advice and guidance can be found in **Guidance for Safer Working Practice for Adults who Work with Children and Young People in Education Settings** (2015) which can be found in the Staffroom.

Staff should be particularly aware of the professional risks associated with the use of social media and electronic communication (email, mobile phones, texting, social network sites etc.) and should familiarise themselves with advice and professional expectations outlined in **Guidance for Safer Working Practice, the School's Online Safety Policy and Staff Handbook and Safe Practice with Technology – Guidance for Adults who Work with Children and Young People**

## Staff supervision and support

Any member of staff affected by issues arising from concerns for children's welfare or safety can seek support from the DSL.

All new Staff including newly qualified teachers and support staff will receive induction training and have a mentor or co-ordinator with whom they can discuss concerns including safeguarding concerns.

The induction process will include familiarisation with child protection responsibilities and procedures to be followed if staff have any concerns about a child's safety or welfare.

The School will provide appropriate supervision and support for all Staff to ensure that:

- All Staff are competent to carry out their responsibilities for safeguarding and promoting the welfare of children
- Staff are able to creating an environment where Staff feel able to raise concerns and feel supported in their safeguarding role
- All Staff have regular reviews of their own practice to ensure they improve over time.

The DSL will also put staff in touch with outside agencies for professional support if they so wish. Staff can also approach organisations such as their Union, the Education Support Partnership or other similar organisations directly. Further information about a range of supporting organisations can be found in Appendix 5.

The School will ensure that Staff who are working within the foundation stage are provided with appropriate supervision in accordance with the statutory requirements of Early Years Foundation Stage 2014.

## Safer recruitment

The School is committed to ensure that all steps are taken to recruit Staff who are safe to work with our pupils/students and have their welfare and protection as the highest priority. The Governing Body and Leadership Team are responsible for ensuring that the School follows safe recruitment processes outlined within guidance, including accurate maintenance of the Single Central Record (SCR); and an application, vetting and recruitment process which places safeguarding at its centre, regardless of employee or voluntary role.

The Governing Body will ensure that the Headteacher, other senior staff responsible for recruitment and one member of the Governing Body complete accredited Safer Recruitment Training in line with government requirements.

We are also committed to supporting the [statutory guidance](#) from the Department for Education on the application of the Childcare (Disqualification) Regulations 2009 and related obligations under the Childcare Act 2006 in schools. Schools and local authorities must have regard to it when carrying out their duties to safeguard and promote the welfare of children under section 175, of the Education Act 2002, paragraph 7(b) of Schedule 1 to the Education (Independent School Standards) Regulations 2014 and paragraph 3 of the Schedule to the Education (Non-Maintained Special Schools)(England) Regulations 2011.

## Safeguarding and child protection procedures

The School adheres to the KSCB Safeguarding Children Procedures (Online, April 2016). The full KSCB procedures and additional guidance relating to specific safeguarding issues can be found on the KSCB website [www.kscb.org.uk](http://www.kscb.org.uk)

Additional guidance for staff includes

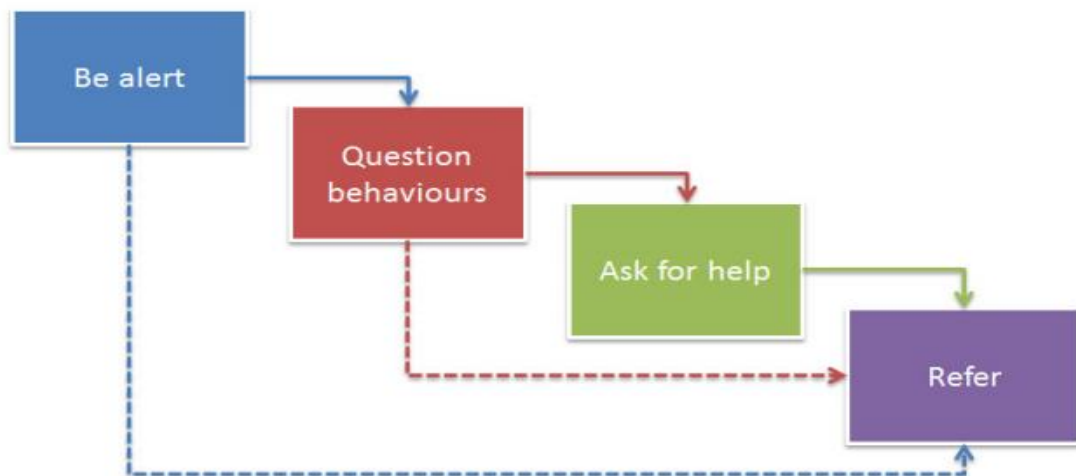
- **'What to do if you are Worried About a Child Being Abused'** (DfE 2015)

- **Information Sharing advice for safeguarding practitioners (2016)**
- **Kent and Medway Inter-Agency Threshold Criteria for Children in Need**
- **The Assessment Framework for Children in Need and their Families (2000)**

These documents can be found in the Inclusion Managers Office.

'What to do if you are worried about a child being abused' (DfE 2015) p.12 identifies that there are four key steps for professionals to follow to help identify and respond appropriately to possible abuse and/or neglect.

All Staff are expected to be aware of and follow this approach:



It may not always be appropriate to go through all four stages sequentially and if a child is in immediate danger or is at risk of harm, a referral should be made immediately to children's social care and/or the police.

**The role of the School in situations where there are child protection concerns is NOT to investigate but to recognise and refer.**

It is the responsibility of the DSL to receive and collate information regarding individual children, to make immediate and on-going assessments of potential risk and to decide actions necessary (with parents / carers in most cases).

This includes the need to make referrals to partner agencies and services.

- To help with this decision s/he may choose to consult with the Area Education Safeguarding Adviser from the Education Safeguarding Team and/or the Education Safeguarding Adviser (Online Protection) for online safety concerns.
- Advice may also be sought from the Early Help Triage Team.
- Issues discussed during consultations may include the urgency and gravity of the concerns for a child or young person and the extent to which parents/carers are made aware of these.

All Staff are made aware of the early help process, and understand their role within it. This includes identifying emerging problems, liaising with the DSL, sharing information with other professionals to support early identification and assessment and, in some cases, acting as the lead professional in undertaking an early help assessment.

If early help is assessed to be appropriate then the DSL will support staff members involved with the family in liaising with other agencies and submitting an Early Help Notification Form. The DSL will keep all early help cases under constant review and will give consideration to making a referral to SCS if the situation doesn't appear to be improving for the child.

New referrals to services will be made using the agreed Kent process i.e. the Early Help Notification form or inter-agency referral form for referrals to SCS. These will be made with reference to the Kent Interagency Threshold Criteria for Children in Need (KSCB). In situations where there are felt to be urgent or grave concerns, a telephone referral will be made prior to the form being completed and sent to the County Duty Team. Concerns for children who are already known to services will be passed to the allocated worker / Team.



All Staff are aware of the process for making referrals to SCS for statutory assessments under the Children Act 1989 that may follow a referral, along with the role they might be expected to play in such assessments.

**In all but the most exceptional circumstances, parents /carers will be made aware of the concerns felt for a child or young person at the earliest possible stage. In the event of a referral to SCS being necessary, parents/carers will be informed and consent to this will be sought unless there is a valid reason not to do so.**

In the absence of the availability of the DSL to discuss an immediate and urgent concern, Staff can seek advice from the Education Safeguarding Team (contact details are displayed in the Staffroom). If anyone other than the DSL makes a referral to external services, then they will inform the DSL as soon as possible.

On occasion, Staff may pass information about a child to the DSL, but remain anxious about action subsequently taken. Staff should feel able to clarify with the DSL further progress, so that they can reassure themselves the child is safe and their welfare is being considered.

If following this process, the staff member remains concerned that appropriate action is not being taken then the member of staff should seek further direct consultation from a member of the Education Safeguarding Team who will be able to discuss the concern and provide further advice on appropriate action to be taken.

If after a referral a child's situation does not appear to be improving then the DSL (or the person that made the referral) will press for reconsideration to ensure that the School's concerns have been addressed and, most importantly, that the child's situation improves. Professional disagreements (escalation) will be responded to in line with the KSCB procedures and DSLs may request support via the Education Safeguarding Team.

## Record Keeping

Staff must record any welfare concern that they have about a child on a safeguarding incident/concern form (with a body map where injuries have been observed) and pass this without delay to the DSL. Records must be completed as soon as possible after the incident/event and must be signed and dated. Incident/concern "**Green forms**" are kept in the staffroom (see Appendix 8).

All safeguarding concerns, discussions and decisions made and the reasons for those decisions will be recorded in writing. If Staff are in any doubt about recording requirements then they will discuss their concerns with DSL.

Safeguarding records are kept separate from all other record relating to the child in school. They are retained centrally and securely by the DSL and are shared on a 'need to know' basis only. They should be held separate from the child's curriculum file. The Headteacher will be kept informed of any significant issues by the DSL.

All safeguarding records will be forwarded in accordance with data protection legislation to a child's subsequent school/setting, under confidential and separate cover to the new DSL or Headteacher and a receipt of delivery will be obtained.

Detailed guidance on Record Keeping is found in a separate document "**Guidelines for Safeguarding Record Keeping in Schools**" – All Staff **WILL** familiarise themselves with the responsibilities outlined in this document.

## Working with Other Agencies

The School recognises and is committed to its responsibility to work with other professionals and agencies both to ensure children's needs are met and to protect them from harm. We will endeavour to identify those children and families who may benefit from the intervention and support of external professionals and will seek to enable referrals (in discussion with parents/carers) as appropriate.

Schools are not the investigating agency when there are child protection concerns and thus, the School will pass all relevant cases to the statutory agencies, who we will support in undertaking their roles. Staff should understand that alongside this, the School may have a crucial role in supporting the child whilst investigations and assessments take place.

The School recognises the importance of multi-agency working and will ensure that staff are enabled to attend relevant safeguarding meetings, including Child Protection Conferences, Core Groups, Strategy Meetings, Child in Need meetings and Early Help Teams around the Child / Family.



The SLT and DSL will work to establish strong and co-operative relationships with relevant professionals in other agencies.

## Confidentiality and information sharing

The School recognises that all matters relating to child protection are confidential. The DSL will only disclose information about a pupil to other members of staff on a need to know basis

All Staff must be aware that whilst they have duties to keep any information about children, families and colleagues which have access to as a result of their role confidential, they also have a professional responsibility to share information with other agencies in order to safeguard children. All staff must be aware that they cannot promise a child to keep secrets which might compromise the child's safety or wellbeing.

Further advice on responding to disclosures can be found in the School's **Confidentiality policy**, Appendix 4 and in the DfE's **Guidance on Information Sharing** (published March 2015).

All staff must be aware that they have a professional responsibility to share information with other agencies in order to safeguard children. All staff must be aware that they cannot promise a child to keep secrets which might compromise the child's safety or wellbeing.

If the School is made aware of any safeguarding concerns which they feel need to be shared with the wider community (including other local schools) then advice will be sought from the Education Safeguarding team to ensure that the integrity of any subsequent investigations are maintained and that all members of the community are safeguarded.

## Complaints & Allegations against members of staff

The School has a **Complaints Procedure** available to parents, pupils/students and Staff who wish to report concerns. This can be found in the School Office and on the website.

All reported concerns will be taken seriously and considered within the relevant and appropriate process. Anything that constitutes an allegation against a member of staff or volunteer will be dealt with under the specific **Procedures for Managing Allegations Against Staff policy**. This can be found in the School office.

The School recognises that it is possible for staff and volunteers to behave in a way that might cause harm to children and takes seriously any allegation received. Such allegations should be referred immediately to the Headteacher who will first contact the Local Authority Designated Officer (LADO) to agree further action to be taken in respect of the child and staff member. In the event of allegations of abuse being made against the Headteacher then Staff are advised that allegations should be reported directly to the LADO.

All staff and volunteers should feel able to raise concerns about poor or unsafe practice and such concerns will always be taken seriously by the senior leadership team.

**All staff need to be aware of the School's Whistleblowing procedure and that it is a disciplinary offence not to report concerns about the conduct of a colleague that could place a child at risk.**

Staff can also access the NSPCC whistleblowing helpline if they do not feel able to raise concerns regarding child protection failures internally. Staff can call: 0800 028 0285 (8:00 AM to 8:00 PM Monday to Friday) or email: [help@nspcc.org.uk](mailto:help@nspcc.org.uk)

The School has a legal duty to refer to the Disclosure and Barring Service (DBS) anyone who has harmed, or poses a risk of harm, to a child, or if there is reason to believe the member of staff has committed one of a number of listed offences, and who has been removed from working (paid or unpaid) in regulated activity, or would have been removed had they not left. The DBS will consider whether to bar the person. If these circumstances arise in relation to a member of staff at our school, a referral will be made as soon as possible after the resignation or removal of the individual in accordance with advice from the LADO and/or Schools Personnel Service

For specific guidance on how to respond to allegations against staff, please refer to the School's **Allegations of Abuse Against Staff policy and Whistleblowing policy**.





## When in doubt – consult

### Peer on peer abuse

Staff and the School recognises that children are capable of abusing their peers. Peer on peer abuse can take many forms, including (but not limited to) bullying, cyberbullying, gender-based abuse, hazing (initiation type violence), sexually harmful behaviour and violence and sexting. The School is mindful that some potential issues may be affected by the gender, age, ability and culture of those involved.

The School believes that abuse is abuse and it will never be tolerated, dismissed or minimised. Any incidents of peer on peer abuse will be managed in the same way as any other child protection concern and will follow the same procedures, as outlined, above and in accordance with Kent Safeguarding Children Board procedures.

The School is aware of the potential gender issues that can be prevalent when dealing with peer on peer abuse including but not limited to, girls being sexually touched/assaulted or boys being subject to initiation/hazing type violence.

Further information about the schools response to specific allegations of abuse against pupils can be located in the **Behaviour & Discipline (including anti-bullying) and online safety policies**.

The school will respond to cases of “sexting” (or Youth Produced Sexual Imagery) in line with the UKCCIS “Sexting in Schools and Colleges” guidance and KSCB guidance. Further information in relation to the schools approach to “sexting” can be found in the school online safety policy

The school will take steps to minimise the risk of all forms of peer on peer abuse. The School will ensure that appropriate curriculum time is dedicated to enable children to develop an awareness and understanding of abusive behaviour and to ensure that children recognise warning signs and supports of support both within the School and externally (such as Kent Police, ChildLine etc.).

Pupils who have been experienced “peer on peer” abuse will be supported by:

- Offering them an immediate opportunity to discuss the experience with a member of staff of their choice
- Being advised to keep a record of concerns as evidence and discussions regarding how to respond to concerns and build resilience, if appropriate.
- Providing reassurance and continuous support
- Working with the wider community and local/national organisations to provide further or specialist advice and guidance

Pupils who are alleged to have abused other pupils will be helped by:

- Discussing what happened, establishing the specific concern and the need for behaviour to change
- Informing parents/carers to help change the attitude and behaviour of the child
- Providing appropriate education and support
- Sanctioning them in line with School's **Behaviour and Discipline policy**. This may include official warnings, detentions, removal of privileges (including denial of online access), fixed-term and permanent exclusions.
- Speaking with police or other local services (such as early help or children's specialist services) as appropriate

Further information about the School's response to allegations of abuse against pupils can be located in the School's **Behaviour & Discipline policy**.

The School is aware of and will follow the KSCB procedures ([www.kscb.org.uk](http://www.kscb.org.uk)) for supporting children who are at risk of harm as a result of their own behaviour.

## Safeguarding children with special educational needs and disabilities

The School acknowledges that children with special educational needs (SEN) and disabilities can face additional safeguarding challenges as they may have an impaired capacity to resist or avoid abuse. They may have speech, language and communication needs which may make it difficult to tell others what is happening



The School will ensure that children with SEN and disabilities, specifically those with communication difficulties will be supported to ensure that their voice is heard and acted upon.

Staff are encouraged to be aware that children with SEN and disabilities can be disproportionately impacted by safeguarding concerns such as bullying. All Staff will be encouraged to appropriately explore possible indicators of abuse such as behaviour/mood change or injuries and not to assume that they are related to the child's disability and be aware that children with SEN and disabilities may not always outwardly display indicators of abuse.

## Curriculum and Staying Safe

Schools play an essential role in helping children to understand and identify the parameters of what is appropriate child and adult behaviour; what is 'safe'; to recognise when they and others close to them are not safe; and how to seek advice and support when they are concerned.

The School will use the curriculum to provide opportunities for increasing self-awareness, self-esteem, social and emotional understanding, assertiveness and decision making so that students have a range of contacts and strategies to ensure their own protection and understand the importance of protecting others, including online.

Pupils will be educated at a level appropriate to their age and ability about a range of safeguarding concerns through personal, social, health and economic education (PSHE), tutorials (if appropriate) and through sex and relationship education (SRE). This will include, but is not limited, to age appropriate information on bullying (including cyber bullying), radicalisation, child sexual exploitation (CSE), stranger danger, road safety, sexual abuse, neglect, gender based violence/sexual assaults and sexting.

Systems have been established to support the empowerment of children to talk to a range of staff when they are in difficulty and to raise comments, complaints and feedback about their school experience. Children will be listened to and heard and their concerns will be taken seriously and acted upon as appropriate. Records will be kept of reported incidents in line with guidance.

Specific systems outside of expected day to day classroom interaction and support include: the School Council, buddy and Smile Ambassador (peer mentoring systems) and regular pupil feedback questionnaires.

## Online Safety

It is recognised that the use of new technologies presents particular challenges and risks to children and adults both inside and outside of school.

The School identifies that the issues classified within online safety are considerable, but can be broadly categorised into three areas of risk:

- **content:** being exposed to illegal, inappropriate or harmful material
- **contact:** being subjected to harmful online interaction with other users
- **conduct:** personal online behaviour that increases the likelihood of, or causes, harm

The DSL and leadership team have read Annex C regarding Online Safety within 'Keeping children safe in education' 2018. The DSL has attended specific training related to online safety.

The School will ensure that appropriate filtering and monitoring systems are in place when pupils and staff access school systems and internet provision. The School will be careful to ensure that these systems do not place unreasonable restrictions on internet access or limit what children can be taught with regards to online teaching and safeguarding. The School acknowledges that whilst filtering and monitoring is an important part of schools online safety responsibilities, it is only one part of our role. Children and adults may have access to systems external to the school control such as mobile phones and other internet enabled devices and technology.

The School will ensure a comprehensive curriculum response to enable all pupils/students to learn about and manage the associated risks effectively and will support parents and the School community (including all members of staff) to become aware and alert to the needs of keeping children safe online.

Detailed information can be found in the **School's Online Safety and ICT Staff Acceptable Use policy** which can be found in the School office and on the website.





## The Use of School Premises by Other Organisations

Where services or activities are provided separately by another body using the School premises, the Headteacher and Governing Body will seek assurance that the organisation concerned has appropriate policies and procedures in place with regard to safeguarding children and child protection and that relevant safeguarding checks have been made in respect of staff and volunteers. If assurance is not achieved, an application to use premises may be refused. Please refer to the **School's Lettings Policy** for more details.

## Security

All staff have a responsibility for maintaining awareness of buildings and grounds security and for reporting concerns that may come to light. We operate within a whole-school community ethos and welcome comments from pupils/students, parents and others about areas that may need improvement as well as what we are doing well.

Appropriate checks will be undertaken in respect of visitors (which include ex-members of staff) and volunteers coming into school as outlined within the **School's Visitors Policy**. Visitors will be expected to sign in and out via the Reception visitors log and to display a visitors badge whilst on the School site. Any individual who is not known or identifiable should be challenged for clarification and reassurance.

The School will not accept the behaviour of any individual (parent or other) that threatens school security or leads others (child or adult) to feel unsafe. Such behaviour will be treated as a serious concern and may result in a decision to refuse access for that individual to the School site.

## Searching and Confiscation

The School follows the DfE's **Behaviour and Discipline in Schools January 2016 guidance** on Searching and Confiscation. The key points are detailed in the **School's Behaviour & Discipline policy**.

## Monitoring and Review

All staff should have access to this policy and sign to the effect that they have read and understood its content.

The procedures in this policy will be formally reviewed annually and amended in the light of any new information and guidance which becomes available.



## Appendix 1: Responsibilities of the Governing Body and the Headteacher

The **Governing Body** has the responsibility to ensure:

- There is a named Designated Safeguarding Lead (DSL), who is a member of the senior leadership team and who has undertaken approved KSCB training in inter-agency working, in addition to basic child protection training;
  - The DSL, or a deputy, should always be available during school hours, term time for staff to discuss any safeguarding concerns;
  - The DSL and any deputies have undergone KSCB approved training which is updated every two years and their knowledge is updated at least annually.
- There are appropriate policies and procedures in place in order for appropriate action to be taken in a timely manner to safeguard and promote children's welfare. These include;
  - An effective up-to-date child protection policy which is consistent with KSCB requirements, reflects different gender issues, is reviewed annually (as a minimum) and is available publicly either via the school or college website or by other means;
  - A staff behaviour policy (Code of Conduct) including an Acceptable Use Policy;
  - Dealing with allegations of abuse made against members of staff including allegations made against the head teacher;
  - Safer recruitment procedures, which include the requirement for appropriate checks in line with national guidance are in place;
- These policies and Part One of KCSIE 2018 and information about the role of the DSL should be provided to all staff on induction. The governing body should take a "proportional risk based approach" to the level of information provided to temporary staff and volunteers, as stated in KCSIE Part 2 (para 48) but as a minimum, all temporary staff and volunteers are made aware of the school's arrangements for safeguarding;
- That the school contributes to interagency working in line with the statutory guidance Working Together to Safeguard Children 2015, including providing a coordinated offer of Early Help and contributing to interagency plans to provide support to children subject to child protection plans.
- That the procedures in place in the school take into account the procedures and practice of KSCB, including the Kent interagency threshold document.
- That staff understand the Data Protection Act 1998 is not a barrier to sharing information where there is a concern about a child.
- Mechanisms are in place to assist staff to understand and discharge their role and responsibilities as set out in Part One of Keeping Children Safe in Education 2018.
- There is an up-to-date and appropriate training strategy which ensures all members of staff, including the managers, teaching and non-teaching staff (both permanent and temporary) receive safeguarding training.
- That appropriate filters and appropriate monitoring systems for school systems and internet enabled devices are in place whilst being mindful to ensure that over blocking" does not lead to unreasonable restrictions as to what children can be taught with regards to online teaching and safeguarding.
- That the governing body nominates a member (normally the chair) to be responsible for liaising with the local authority and other agencies in the event of an allegation being made against the head teacher. An annual report will be submitted to the local authority about how the governing body's duties have been carried out. Any weaknesses or areas of concern will be rectified without delay.
- Children are taught about safeguarding, including online, through teaching and learning opportunities, as part of providing a broad and balanced curriculum. This may include covering relevant issues through personal, social, health and economic education (PSHE) and sex and relationship education (SRE).
- That sufficient time and resources are allocated to enable the DSL (and any appropriately trained deputies) to carry out their roles effectively, including the assessment of pupils and the attendance at strategy discussions and other necessary meetings.



- That all members of staff feel able to raise concerns about poor or unsafe practice and that such concerns are handled sensitively and in accordance with the school's whistle blowing procedures.

The **Headteacher** has the responsibility to ensure:

- That the child protection policy and procedures are implemented and followed by all Staff
- That sufficient time and resources are allocated to enable the DSL (and any appropriately trained deputies) to carry out their roles effectively, including the assessment of pupils and the attendance at strategy discussions and other necessary meetings
- That all Staff feel able to raise concerns about poor or unsafe practice and that such concerns are handled sensitively and in accordance with the School's whistleblowing procedures
- That child's safety and welfare is addressed through the curriculum

Under Review



## Appendix 2: Categories of Abuse

**All staff should be aware that abuse, neglect and safeguarding issues are rarely standalone events that can be covered by one definition or label. In most cases multiple issues will overlap with one another.**

**Abuse:** A form of maltreatment of a child. Somebody may abuse or neglect a child by inflicting harm or by failing to act to prevent harm. Children may be abused in a family or in an institutional or community setting by those known to them or, more rarely, by others. Abuse can take place wholly online, or technology may be used to facilitate offline abuse. Children may be abused by an adult or adults or by another child or children (Keeping children safe in education 2018)

**Sexual abuse:** involves forcing or enticing a child or young person to take part in sexual activities, not necessarily involving a high level of violence, whether or not the child is aware of what is happening. The activities may involve physical contact, including assault by penetration (for example rape or oral sex) or non-penetrative acts such as masturbation, kissing, rubbing and touching outside of clothing. They may also include non-contact activities, such as involving children in looking at, or in the production of, sexual images, watching sexual activities, encouraging children to behave in sexually inappropriate ways, or grooming a child in preparation for abuse (including via the internet). Sexual abuse is not solely perpetrated by adult males. Women can also commit acts of sexual abuse, as can other children.

### Signs that MAY INDICATE Sexual Abuse

- Sudden changes in behaviour and school performance
- Displays of affection which are sexual and age inappropriate
- Self-harm, self-mutilation or attempts at suicide
- Alluding to secrets which they cannot reveal
- Tendency to cling or need constant reassurance
- Regression to younger behaviour for example thumb sucking, playing with discarded toys, acting like a baby
- Distrust of familiar adults e.g. anxiety of being left with relatives, a child minder or lodger
- Unexplained gifts or money
- Depression and withdrawal
- Fear of undressing for PE
- Sexually transmitted disease
- Fire setting

**Physical abuse:** a form of abuse which may involve hitting, shaking, throwing, poisoning, burning or scalding, drowning, suffocating or otherwise causing physical harm to a child. Physical harm may also be caused when a parent or carer fabricates the symptoms of, or deliberately induces, illness in a child.

### Signs that MAY INDICATE physical abuse

- Bruises and abrasions around the face
- Damage or injury around the mouth
- Bi-lateral injuries such as two bruised eyes
- Bruising to soft area of the face such as the cheeks
- Fingertip bruising to the front or back of torso
- Bite marks
- Burns or scalds (unusual patterns and spread of injuries)
- Deep contact burns such as cigarette burns
- Injuries suggesting beatings (strap marks, welts)
- Covering arms and legs even when hot
- Aggressive behaviour or severe temper outbursts.
- Injuries need to be accounted for. Inadequate, inconsistent or excessively plausible explanations or a delay in seeking treatment should signal concern.



**Emotional abuse:** the persistent emotional maltreatment of a child such as to cause severe and adverse effects on the child's emotional development. It may involve conveying to a child that they are worthless or unloved, inadequate, or valued only insofar as they meet the needs of another person. It may include not giving the child opportunities to express their views, deliberately silencing them or 'making fun' of what they say or how they communicate. It may feature age or developmentally inappropriate expectations being imposed on children. These may include interactions that are beyond a child's developmental capability as well as overprotection and limitation of exploration and learning, or preventing the child participating in normal social interaction. It may involve seeing or hearing the ill-treatment of another. It may involve serious bullying (including cyberbullying), causing children frequently to feel frightened or in danger, or the exploitation or corruption of children. Some level of emotional abuse is involved in all types of maltreatment of a child, although it may occur alone.

#### **Signs that MAY INDICATE emotional abuse**

- Over reaction to mistakes
- Lack of self-confidence/esteem
- Sudden speech disorders
- Self-harming
- Eating Disorders
- Extremes of passivity and/or aggression
- Compulsive stealing
- Drug, alcohol, solvent abuse
- Fear of parents being contacted
- Unwillingness or inability to play
- Excessive need for approval, attention and affection

**Neglect:** the persistent failure to meet a child's basic physical and/or psychological needs, likely to result in the serious impairment of the child's health or development. Neglect may occur during pregnancy as a result of maternal substance abuse. Once a child is born, neglect may involve a parent or carer failing to: provide adequate food, clothing and shelter (including exclusion from home or abandonment); protect a child from physical and emotional harm or danger; ensure adequate supervision (including the use of inadequate care-givers); or ensure access to appropriate medical care or treatment. It may also include neglect of, or unresponsiveness to, a child's basic emotional needs.

#### **Signs that MAY INDICATE neglect.**

- Constant hunger
- Poor personal hygiene
- Constant tiredness
- Inadequate clothing
- Frequent lateness or non-attendance at school
- Untreated medical problems
- Poor relationship with peers
- Compulsive stealing and scavenging
- Rocking, hair twisting and thumb sucking
- Running away
- Loss of weight or being constantly underweight
- Low self esteem



## Appendix 3: Specific Safeguarding Issues (See Annex A of Keeping Children Safe in Education 2018)

### Children Missing Education (CME)

The School recognises that all children, regardless of their circumstances, are entitled to a full time education which is suitable to their age, ability, aptitude and any special educational needs they may have. The School is aware that a child going missing from education is a potential indicator of abuse or neglect.

The School has a procedure in place for responding to unauthorised absence and for dealing with children that go missing from education, particularly on repeat occasions, to help identify the risk of abuse and neglect, including sexual exploitation, and to help prevent the risks of their going missing in future. For further information, please access the School's **Attendance policy**.

### Child Sexual Exploitation (CSE)

All Staff at have been made aware of the revised definition of Child Sexual Exploitation, as issued in the Department for Education in February 2017.

*Child sexual exploitation is a form of child sexual abuse. It occurs where an individual or group takes advantage of an imbalance of power to coerce, manipulate or deceive a child or young person under the age of 18 into sexual activity (a) in exchange for something the victim needs or wants, and/or (b) for the financial advantage or increased status of the perpetrator or facilitator. The victim may have been sexually exploited even if the sexual activity appears consensual. Child sexual exploitation does not always involve physical contact; it can also occur through the use of technology.*

The School identifies that CSE involves exploitative situations, contexts and relationships where young people receive something (for example food, accommodation, drugs, alcohol, gifts, money or in some cases simply affection) as a result of engaging in sexual activities.

Staff recognise that children at risk of CSE need to be identified and issues relating to CSE should be approached in the same way as protecting children from other risks. Staff are aware that sexual exploitation can take many forms ranging from the seemingly 'consensual' relationship where sex is exchanged for affection or gifts, to serious organised crime by gangs and groups. What marks out exploitation is an imbalance of power in the relationship. The perpetrator always holds some kind of power over the victim which increases as the exploitative relationship develops. Sexual exploitation may involve varying degrees of coercion, intimidation or enticement, including unwanted pressure from peers to have sex, sexting, sexual bullying including cyberbullying and grooming. However, it also important to recognise that some young people who are being sexually exploited do not exhibit any external signs of this abuse or recognise this as abusive.

### 'Honour based' violence

Staff are aware that 'Honour-based' violence (HBV) encompasses a range of crimes which have been committed to protect or defend the honour of the family and/or the community, including Female Genital Mutilation (FGM), forced marriage, and practices such as breast ironing.

The indicators of HBV and associated factors will be covered with staff within the School's safeguarding training. All Staff are alert to the possibility of a child being at risk of HBV, or already having suffered HBV. All Staff are aware that all forms of HBV are abuse (regardless of the motivation) and will be handled and escalated as such. Staff will speak with DSL if they are concerned about HBV.

All Staff will follow the School and KSCB procedures, using existing national and local protocols for multi-agency liaison with police and children's social care.

### Forced Marriage

The Forced Marriage Unit has published [Multi-agency guidelines](#), with pages 32-36 focusing on the role of schools and colleges. Staff should report concerns regarding forced marriage to the DSL or can contact the Forced Marriage Unit if they need advice or information. Contact: 020 7008 0151 or email: [fm@fco.gov.uk](mailto:fm@fco.gov.uk)



## Female Genital Mutilation (FGM) mandatory reporting duty

Teachers must personally report to the police cases where they discover that an act of FGM appears to have been carried out. Unless the teacher has a good reason not to, they should also still consider and discuss any such case with the DSL and involve children's social care as appropriate. The duty does not apply in relation to at risk or suspected cases (i.e. where the teacher does not discover that an act of FGM appears to have been carried out, either through disclosure by the victim or visual evidence) or in cases where the woman is 18 or over. In these cases, teachers should follow local safeguarding procedures.

[Summary of the FGM mandatory reporting duty](#)

## Radicalisation

The School recognises that exposure of children (and adults) to extremist ideology can hinder their social development and educational attainment alongside posing a very real risk that they could support or partake in an act of violence. Radicalisation of young people can be compared to grooming for sexual exploitation.

The School will ensure all staff complete an e-learning training package developed by The National Counter Terrorism Policing Headquarters (NCTPHQ), in conjunction with the College of Policing which includes guidance on how to identify people who may be vulnerable to being drawn into terrorism, and how to refer them into the Channel process. The DSL will attend additional training which includes further information on the Prevent Duty.

Every member of staff recognises that children exposed to radicalisation and extremism is no different to safeguarding against any other vulnerability and should be approached in the same way as protecting children from other risks. All members of the community will report concerns regarding radicalisation and extremism to the DSL who will follow local and national guidance.

Additional information about responding to online radicalisation and extremism can be found in the School's **Online Safety policy**.



## Appendix 4: Keeping yourself safe when responding to disclosures (the 6 R's – what to do if...)

### 1. Receive

- Keep calm
- Listen to what is being said without displaying shock or disbelief
- Take what is being said to you seriously
- Note down what has been said

### 2. Respond

- Reassure the pupil that they have done the right thing in talking to you
- Be honest and do not make promises you cannot keep e.g. “It will be alright now”
- **Do not promise confidentiality**; you have a duty to refer
- Reassure and alleviate guilt, if the pupil refers to it e.g. “you’re not to blame”
- Reassure the child that information will only be shared with those who need to know

### 3. React

- React to the pupil only as far as is necessary for you to establish whether or not you need to refer the matter, but do not interrogate for full details
- **Do not** ask leading questions; “Did he/she...?” Such questions can invalidate evidence.
- **Do** ask open “TED” questions; Tell, explain, describe
- Do not criticise the perpetrator; the pupil may have affection for him/her
- Do not ask the pupil to repeat it all for another member of staff
- Explain what you have to do next and who you have to talk to

### 4. Record

- Make some brief notes at the time on any paper which comes to hand and write them up as soon as possible
- Do not destroy your original notes
- Record the date, time, place, any non-verbal behaviour and the words used by the child. Always ensure that as far as possible you have recorded the actual words used by the child.
- Record statements and observable things rather than your interpretations or assumptions

### 5. Remember

- Contact the designated safeguarding lead (DSL)
- The DSL may be required to make appropriate records available to other agencies
- KSCB: [www.kscb.org.uk](http://www.kscb.org.uk)

### 6. Relax

- Get some support for yourself, dealing with disclosures can be traumatic for professionals





## Appendix 5: National Support Organisations

### Support for staff

- Education Support Partnership: [www.educationsupportpartnership.org.uk](http://www.educationsupportpartnership.org.uk)
- Professional Online Safety Helpline: [www.saferinternet.org.uk/helpline](http://www.saferinternet.org.uk/helpline)

### Support for Pupils

- NSPCC: [www.nspcc.org.uk](http://www.nspcc.org.uk)
- ChildLine: [www.childline.org.uk](http://www.childline.org.uk)
- Papyrus: [www.papyrus-uk.org](http://www.papyrus-uk.org)
- Young Minds: [www.youngminds.org.uk](http://www.youngminds.org.uk)
- The Mix: [www.themix.org.uk](http://www.themix.org.uk)

### Support for adults

- Family Lives: [www.familylives.org.uk](http://www.familylives.org.uk)
- Crime Stoppers: [www.crimestoppers-uk.org](http://www.crimestoppers-uk.org)
- Victim Support: [www.victimsupport.org.uk](http://www.victimsupport.org.uk)
- Kidscape: [www.kidscape.org.uk](http://www.kidscape.org.uk)
- The Samaritans: [www.samaritans.org](http://www.samaritans.org)
- Mind: [www.mind.org.uk](http://www.mind.org.uk)
- NAPAC (National Association for People Abused in Childhood): [www.napac.org.uk](http://www.napac.org.uk)
- MOSAC: [www.mosac.org.uk](http://www.mosac.org.uk)
- Action Fraud: [www.actionfraud.police.uk](http://www.actionfraud.police.uk)

### Support for Learning Disabilities

- Respond: [www.respond.org.uk](http://www.respond.org.uk)
- Mencap: [www.mencap.org.uk](http://www.mencap.org.uk)

### Domestic Abuse

- Refuge: [www.refuge.org.uk](http://www.refuge.org.uk)
- Women's Aid: [www.womensaid.org.uk](http://www.womensaid.org.uk)
- Men's Advice Line: [www.mensadviceline.org.uk](http://www.mensadviceline.org.uk)
- Mankind: [www.mankindcounselling.org.uk](http://www.mankindcounselling.org.uk)

### Honour based Violence

- Forced Marriage Unit: <https://www.gov.uk/guidance/forced-marriage>

### Sexual Abuse and CSE

- Lucy Faithfull Foundation: [www.lucyfaithfull.org.uk](http://www.lucyfaithfull.org.uk)
- Stop it Now!: [www.stopitnow.org.uk](http://www.stopitnow.org.uk)
- Parents Protect: [www.parentsprotect.co.uk](http://www.parentsprotect.co.uk)
- CEOP: [www.ceop.police.uk](http://www.ceop.police.uk)
- Marie Collins Foundation: [www.mariecollinsfoundation.org.uk](http://www.mariecollinsfoundation.org.uk)
- Internet Watch Foundation (IWF): [www.iwf.org.uk](http://www.iwf.org.uk)

### Online Safety

- Childnet International: [www.childnet.com](http://www.childnet.com)
- UK Safer Internet Centre: [www.saferinternet.org.uk](http://www.saferinternet.org.uk)



- Parents Info: [www.parentsinfo.org](http://www.parentsinfo.org)
- Internet Matters: [www.internetmater.org](http://www.internetmater.org)
- Net Aware: [www.net-aware.org.uk](http://www.net-aware.org.uk)
- ParentPort: [www.parentport.org.uk](http://www.parentport.org.uk)
- Get safe Online: [www.getsafeonline.org](http://www.getsafeonline.org)

**Radicalisation and hate**

- Educate against Hate: [www.educateagainsthate.com](http://www.educateagainsthate.com)
- Counter Terrorism Internet Referral Unit: [www.gov.uk/report-terrorism](http://www.gov.uk/report-terrorism)
- True Vision: [www.report-it.org.uk](http://www.report-it.org.uk)

Under Review



## Appendix 6: School Safeguarding Policies

Policy/Procedure	Statutory
Accessibility Plan	■
Behaviour & Discipline (including Exclusion of pupils, Use of physical restraint and Anti-bullying/Racial, Homophobic and Cyberbullying Incident recording and reporting procedures)	■
Safeguarding including Child Protection recording and retention of records, Safer Recruitment and Searching & Confiscation	■
Confidentiality	
Single Central Record (staff vetting)	■
Data Protection policy	■
Educational Visits Policy	
Equality Policy	■
Online Safety Policy (including Digital Image and Video Sharing, Distribution and Publication Procedure)	
Supporting Pupils with Medical Conditions policy (including first aid and medicines in school)	■
Health & Safety	■
Children in Care	
Allegations of abuse against staff	■
Spiritual, Moral, Social and Cultural policy (including Promoting British Values, PSHE, Drugs, Sex and Relationship Education, RE & Collectible Worship)	■
School Visitors policy	
Special Educational Needs & Disability	■
Staff Handbook	
Whistleblowing	■



## Appendix 7: Child Protection information - Supply Teachers and Classroom Volunteers

### Aim

To ensure all Supply Teachers and Classroom Helpers are aware of the school's Safeguarding Policy and the procedures with regards to Child Protection issues at the school. Cathy Farthing, Headteacher, is the school's Designated Safeguarding Lead (DSL). The DSL is responsible for:

- Co-ordinating Child Protection within the school.
- First port of call for concerns
- Ensuring information/evidence gathering, referrals and procedures are followed correctly
- Supporting staff and consulting with relevant parties involved with the pupil
- Liaising with other agencies and professionals
- Setting up and managing child protection plans
- Keeping up to speed with child protection issues and training and ensuring staff training is kept up to date

### Procedures

There are 4 categories of abuse that you need to be aware of and how symptoms can be identified:

1. Physical abuse
2. Sexual abuse
3. Emotional abuse
4. Neglect

Details of how to identify symptoms of any of these issues can be found in the KCC Child Protection leaflet which is on display in the staffroom (the DSL also has a copy).

**With effect from July 2015 the school has a statutory duty to have due regard to the need to prevent people from being drawn into terrorism. With effect from 31<sup>st</sup> October 2015 Teachers have a mandatory duty to report 'known' cases of FGM in under 18s which they identify in the course of their professional work.**

**If you have any concerns about a child due to behaviour, observations or something that the child has disclosed, it is your duty to report it to the Designated Safeguarding Lead (DSL) to be investigated further and followed through.**

**All staff working in schools need to be aware of and have read Part One of Keeping Children Safe in Education 2016.**

If a child makes a disclosure of abuse to you, the following course of action should be followed:

- Allow the child to make the disclosure at their own pace and in their own way
- Avoid interrupting the child, seeking clarity/questioning them or put words into their mouths
- Reassure the child that they have been heard and explain what you will do next and whom you will talk to. Do NOT promise the child you will not tell anyone/keep their secret and reassure the child that any course of action will be for their safety and well being
- Record the conversation as soon as possible on a **green Safeguarding Incident/Concern Form** (kept in the staffroom)
- Pass information onto the DSL ASAP and meet to discuss the course of action

**Reminder - You have a duty of care to the pupil and all information is strictly confidential!**

### Record keeping

Effective monitoring and record keeping is **vital**. Any incident or behavioural change in the child that causes concern should be recorded on the green Safeguarding Incident/Concern Form. It is important that records are factual and reflect the words used by the child. Do not give your own personal opinion unless you have an evidence base which can be quoted. Records must be signed and dated with timings if available. Original records or relevant evidence can be attached to the green form. Information that needs to be recorded should include;

- Child's name and date of birth
- Incidents that have caused concern (date and time)
- A verbatim record of what the child has said
- If recording bruising/injuries indicate position, colour, size, shape and time on a green **BODY MAP** (also available in the staffroom or from DSL)
- Action taken



**NB: pass on information to DSL as soon as possible. Please feel free to discuss any concerns or questions with the DSL at any time.**

In some cases, the DSL may need to make a referral to other agencies such as the Local Authority Designated Officer (LADO) or Social Services in order to secure the safety and wellbeing of the child.

**Please feel free to discuss any concerns or questions with the DSL at any time.**

Under Review



## Appendix 8: Welfare Incident/Concern Form

### 'THE GREEN FORM'

Pupil/Child name		Date of birth and Year Group/Class	
Name and position of person completing form (please print)			
Date of incident /concern: dd.mm.yy			
Incident / concern (who what where when)*			
Any other relevant information (witnesses, immediate action taken)*			
Signature: (name of member of staff) Role:		Date form completed (DD MM YY):	
Action taken (including reasons for decisions) and Outcomes* (NB – this section is only to be completed by DSL)			
Signature of DSL		Date (DD MM YY)	
Signature of Lead DSL (if appropriate)		Date (DD MM YY)	

\*Continue on a separate sheet if necessary